

TRANSITION ALTITUDE
6000

TRANSITION LEVEL
ATC

AREA MNM ALT (x100)
23

APP	129.550	LUTON RADAR
TWR	132.555, 126.730*	LUTON TOWER
RAD	128.750*	LUTON DIRECTOR
ATIS	120.580	LUTON INFORMATION

* See EGGW AD 2.18 for details.

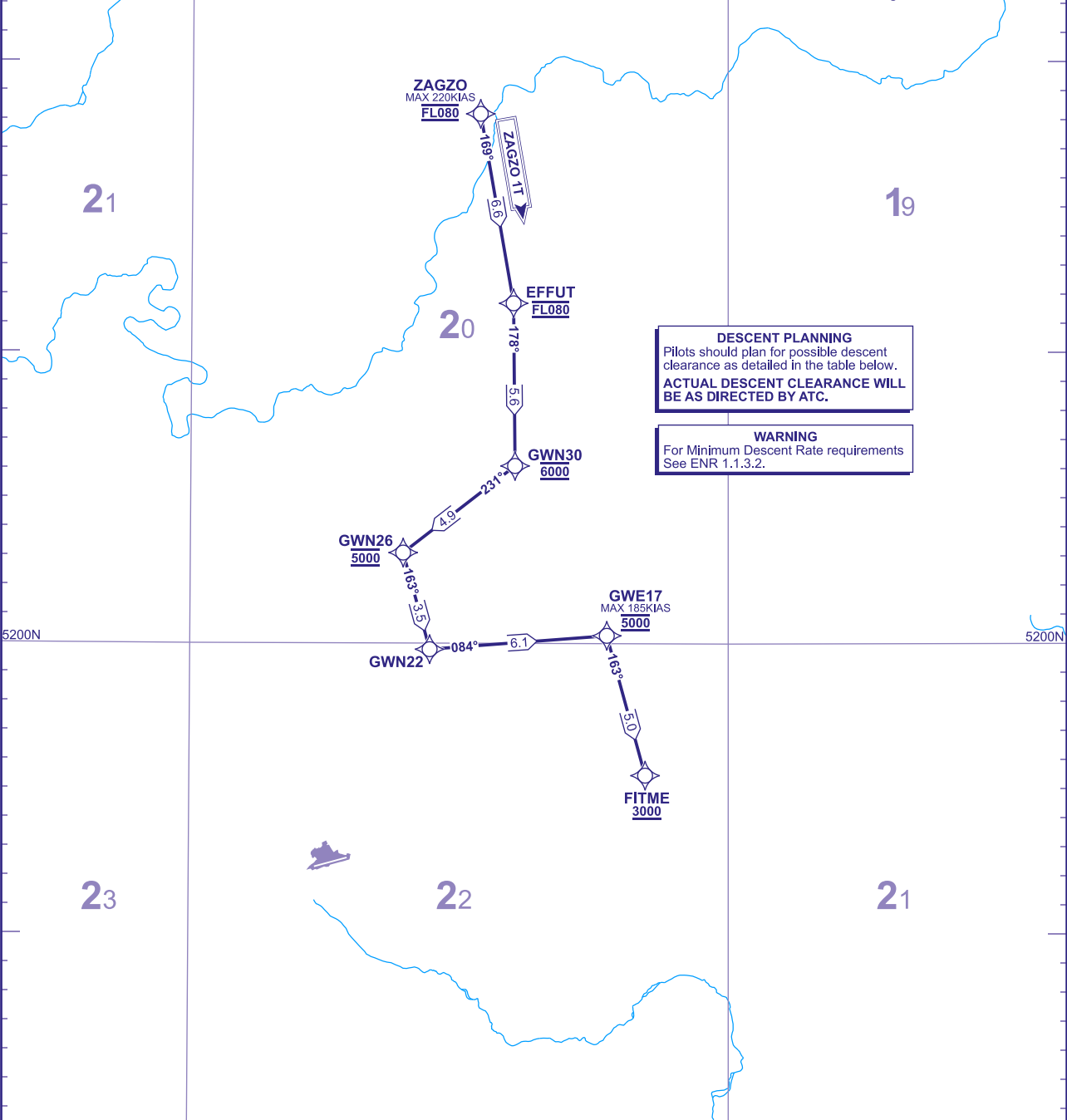
WAYPOINTS

ZAGZO	: 521812.97N 0001352.54W
EFFUT	: 521142.36N 0001200.36W
GWN30	: 520606.88N 0001154.11W
GWN26	: 520307.39N 0001807.70W
GWN22	: 515948.29N 0001637.97W
GWE17	: 520016.82N 0000645.79W
FITME	: 515528.51N 0000437.36W

VAR 1.2°E - 2027

N

Annual Rate
of Change 0.17°E



ROUTE DESIGNATOR	ROUTE	LEVELS
ZAGZO 1T	ZAGZO - EFFUT - GWN30 - GWN26 - GWN22 - GWE17 - FITME	<div>ZAGZO FL080</div> <div>EFFUT FL080</div> <div>GWN30 6000</div> <div>GWN26 5000</div> <div>GWE17 5000</div> <div>FITME +3000</div>